



MONTHLY MEMBERSHIP PROGRESS REPORT

District 11 D2

Results as of: 06/30/2018

GMT: STEVE ANTON

LOCATION MICHIGAN

GMT CA

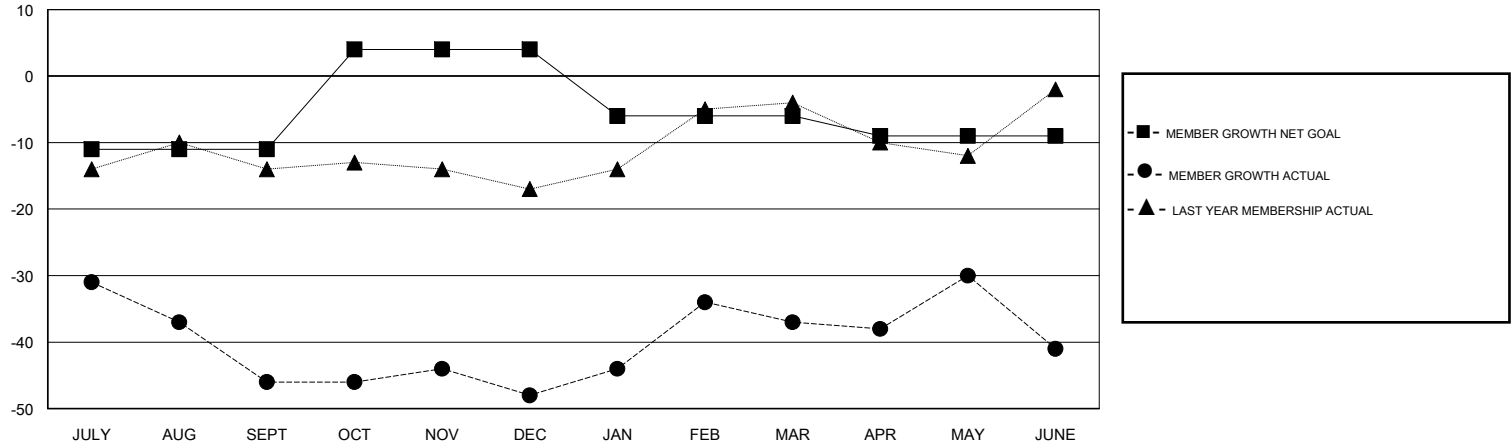
Clubs			
RESULTS FOR 2017-2018			
QUARTER	NEW CLUB GOAL	NEW CLUBS	DROPPED CLUBS
JULY/AUG/SEPT	0	0	1
OCT/NOV/DEC	0	0	1
JAN/FEB/MAR	0	0	0
APR/MAY/JUNE	0	0	0

Members			
RESULTS FOR 2017-2018			
QUARTER	MEMBER GROWTH NET GOAL	MEMBER GROWTH ACTUAL	DROPPED MEMBERS ACTUAL (including transfers)
JULY/AUG/SEPT	-11	31	69
OCT/NOV/DEC	15	28	29
JAN/FEB/MAR	-10	33	21
APR/MAY/JUNE	-3	53	55

GOALS AND ACTUAL NEW CLUBS CUMULATIVE



GOALS AND ACTUAL MEMBERS CUMULATIVE



DROPPED CLUBS: 2	34 CLUBS OF 46 ADDED 1 OR MORE NEW MEMBERS	<u>GENDER DISTRIBUTION</u> MALE 982 (78.00%) FEMALE 277 (22.00%) Women Percentage Fiscal Year Goal: 22%
<u>DROPPED MEMBERS</u> DECEASED 25 CLUB CANCELLED 4 OTHER 145 TOTAL 174	CLICK HERE FOR CUMULATIVE MEMBERSHIP DATA	TOTAL FAMILY UNIT MEMBERS 0 FAMILY MEMBERS PAYING HALF DUES 0